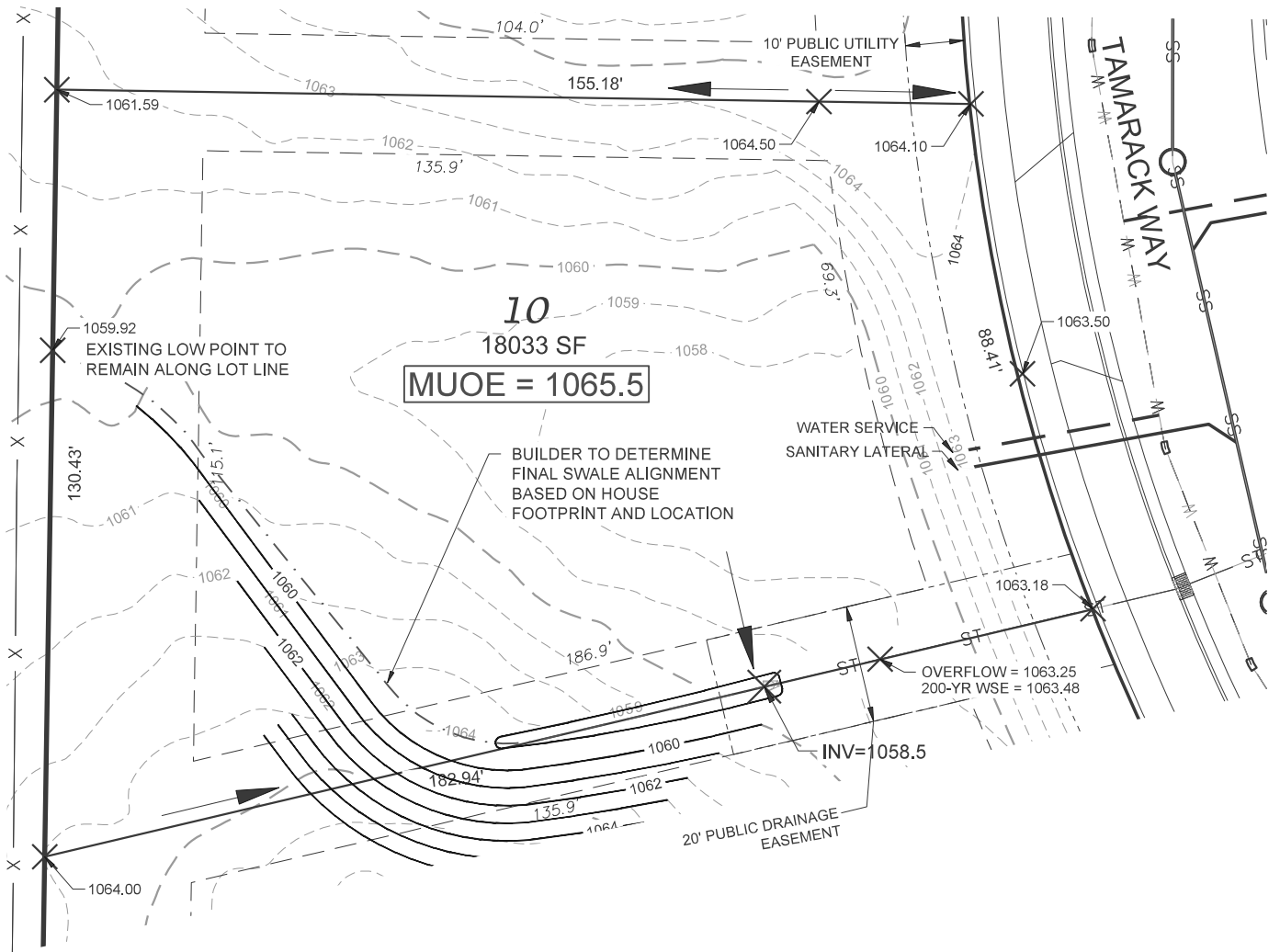


# Kettle Creek North - Lot 10



**NOTES:**

LANDOWNER MUST MAINTAIN DRAINAGE FROM WEST PROPERTY LINE TO STORM SEWER ENDWALL AND MUOE SHALL PROVIDE 2-FT OF FREEBOARD FOR THE 200-YR STORM.

200-YR STORM EVENT WATER SURFACE ELEVATION = 1063.48

IF THE LOT DESIGN IS CHANGED, UPDATED STORMWATER CALCULATIONS AND ASSOCIATED MUOE SHOWING SUFFICIENT SEPARATION SHALL BE SUBMITTED TO THE CITY FOR REVIEW AND APPROVAL.

FRONT YARD SETBACK = 25'  
 REAR YARD SETBACK = 25'  
 SIDE YARD SETBACK = 10'



**D'ONOFRIO KOTTKE AND ASSOCIATES, INC.**  
 7530 Westward Way, Madison, WI 53717  
 Phone: 608.833.7530 • Fax: 608.833.1089  
 YOUR NATURAL RESOURCE FOR LAND DEVELOPMENT



Scale 1" = 30'

DATE: 10-04-22

F.N.: 21-05-140

REV.

DRAWN BY: DWS