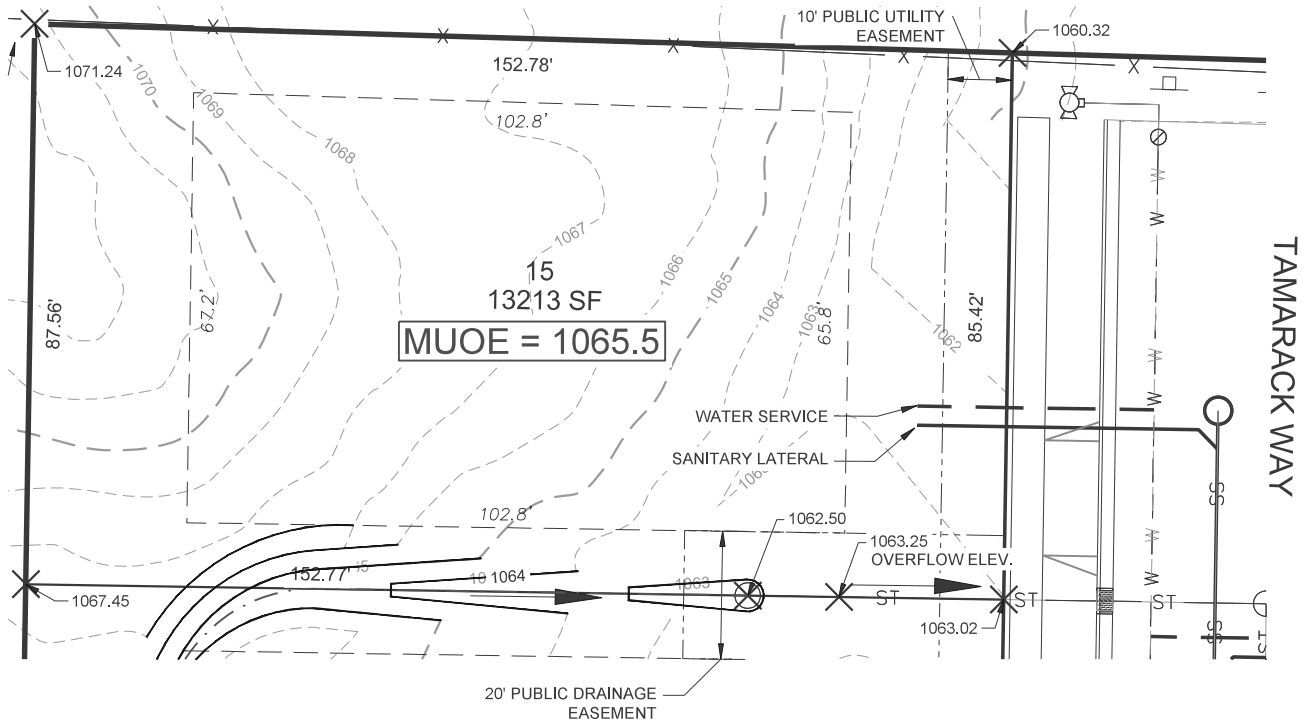


Kettle Creek North - Lot 15



NOTES:

LANDOWNER MUST MAINTAIN DRAINAGE FROM WEST PROPERTY LINE TO STORM SEWER BASIN AND MUOE SHALL PROVIDE 2-FT OF FREEBOARD FOR THE 200-YR STORM.

200-YR STORM EVENT WATER SURFACE ELEVATION = 1063.47

IF THE LOT DESIGN IS CHANGED, UPDATED STORMWATER CALCULATIONS AND ASSOCIATED MUOE SHOWING SUFFICIENT SEPARATION SHALL BE SUBMITTED TO THE CITY FOR REVIEW AND APPROVAL.

FRONT YARD SETBACK = 25'
REAR YARD SETBACK = 25'
SIDE YARD SETBACK = 10'



D'ONOFRIO KOTTKE AND ASSOCIATES, INC.

7530 Westward Way, Madison, WI 53717
Phone: 608.833.7530 • Fax: 608.833.1089
YOUR NATURAL RESOURCE FOR LAND DEVELOPMENT



Scale 1" = 30'

DATE: 10-04-22

F.N.: 21-05-140

REV.

DRAWN BY: DRS

U: /USER/2105140/DRAWINGS/LOT DETAILS PH 4 & 5.DWG